



Opportunities After BIL/IIJA

Presented by Yesenia Chavez, Jackie Coreno, Sarah Gruza

Brownfields Project Managers

May 6, 2026

Today's Agenda:

- Purpose
- Overview of Brownfields Funding & Opportunities
 - Job Training Grants
 - TAG Grants
 - Targeted Brownfields Assessment (TBA)
 - LR Technical Assistance (LRTA)
 - KSU Tribal TAB
- Other Resources
- Questions



Purpose

- Provide information on resources available to Tribes to replace the funding source of BIL/IIJA grants that have allowed Tribes across the region to complete more site-specific activities than before
- Explain how different resources can supplement Brownfields work alongside your 128(a) annual allocation
- Give ideas and examples on how different types of funding can be leveraged to complete projects with mostly outside funding and resources



Brownfields Grant Types Available to Tribes

128(a) – noncompetitive grant - Annual Appropriation funding for a Tribal Response Program

Rosita will be going over FY26 Allocation Reminder(s) for FY27 work

104(K) – competitive grant

- **Assessment**
- Assessment Coalition
- **Community-wide Assessment Grants for States and Tribes (CWAGST)**
- **Cleanup**
- **Multipurpose**



Which type of grant is best?

- What kind of work is most pressing? Number of sites?
- What is your capacity to manage grants?
- Types of proposed projects?
- Urgency of the work?
- Projected timeline?
- Cost of the work?



Cleanup in Wisconsin Point, Fond du Lac Band



Job Training Grants

These grants provide funding to recruit, train, and place unemployed and under-employed residents of communities adversely impacted by the presence of brownfield sites



Dismantling electronics for recycling in the Recycle Force facility in Indianapolis, IN



Job Training Opportunities

All eligible training must have a direct connection to facilitating the inventory of brownfield sites, site assessments, remediation of brownfield sites, community involvement, or site preparation.

Example Courses:

- Green infrastructure and stormwater management
- Emergency planning preparedness and response training
- Brownfields Hazardous waste training
- Energy efficiency and alternative energy technologies

Additional resources and website links to instructional materials, career platforms, inclusive networking opportunities, and more on the EPA website



128(a) TAG Requests

- **Technical Assistance Grant (TAG) Requests: provide funds and technical assistance, up to \$20,000 per request**
 - 128(a) grantees can submit up to 3 TAG requests yearly
 - Type of assistance provided in previous years:
 - Market research analysis
 - Site reuse assessment & planning
 - Pro forma (real estate financial model)
 - Developing Inventory



TBA's Targeted Brownfield Assessments

- **TBA's are conducted by an EPA contractor on behalf of an eligible entity**
 - Site assessments (Phase I & Phase II)
 - Cleanup options and cost estimates (RAPs or ABCAs)
 - Community outreach
 - Does NOT provide assistance to conduct site cleanup or building demolition activities



TBA Examples

- Requests for TBAs can include brownfields sites that have petroleum contamination and/or Hazardous Substances, Asbestos & Lead Surveys
 - Addressing abandoned tanks
 - Identification of contamination if there were releases
 - Assistance with assessing sites where the tank presence is unknown



Tire Grant Funding Opportunities

EPA announced a proposal that will facilitate the cleanup of abandoned scrap tires and help increase their use as an alternative fuel in cement kilns.

Specifically, the EPA is proposing to **classify abandoned scrap tires burned in cement kilns as non-waste fuel**, and to **revise the definition of “established tire collection program” to also include programs that recover abandoned scrap tires**. This proposal would enhance the recovery of energy resources as well as contribute to safer communities by addressing the health risks scrap tires pose from tire pile fires and disease-carrying animals.

EPA will accept comments on this proposal for 60 days, until May 22, 2026.

"Protecting Public Health and Unleashing American Energy by Facilitating Scrap Tire Pile Cleanups"

Federal Register Docket ID No. EPA-HQ-OLEM-2025-1609



Technical Assistance



Land Revitalization Technical Assistance (LR TA)

What is LR TA? EPA contractors assist communities to identify safe site reuse opportunities for their EPA-funded brownfield sites and provide technical assistance to facilitate reuse. Geared toward communities/ sites with prior EPA Brownfields investment.



Building Blocks Workshop meeting with local leaders and steering committee members to discuss the market analysis, site reuse assessment and community priorities for the next phase of Brownfields work, City of Austin, MN



LR Technical Assistance

Who can access/apply?

Any entity with a focus on a brownfield site(s) with an EPA brownfield grant, TBA and/or 128(a) support (current and former)

- Projects are conducted on a rolling basis, and similar to TBAs, are based on need and limited funding.
- Projects typically start with a scoping meeting which can take about 2 months to set up.
 - *Typically projects are completed within 6-10 months but timelines may vary with the scope of services.*



LR TA generally falls into two categories:

Site Visioning and Market Analysis assistance activities can include:

- Market research,
- Labor/ workforce assessments,
- Site reuse design plans, and
- Community engagement/ reuse visioning.

Funding and financing assistance activities can include:

- Funding opportunity analysis,
- Financial feasibility of end uses,
- Evaluation of redevelopment cost estimates,
- Funding gap analysis,
- Funding charrettes, and
- Operating proformas for use in planning and financing.



CONFEDERATED SALISH & KOOTENAI TRIBES

Flathead Post & Pole Site, Flathead Indian Reservation



EPA United States Environmental Protection Agency

GENERAL DYNAMICS Information Technology



VIEW A | LOOKING TO THE NORTHEAST OVER THE PAVILION TO THE PLAYGROUND, COMMUNITY GARDEN, AND RESTROOMS

PROJECT OVERVIEW

Utilizing an iterative design process that incorporated a visioning session, site tour, and interviews/feedback from Confederated Salish and Kootenai Tribe (CSKT) community members and key stakeholders, a Conceptual Reuse Plan was established for the Flathead Post & Pole site. This plan includes initial steps to clean up/remove debris from the site, restore habitat, and establish a community arts and cultural program. Follow-on phases include the design and construction of a variety of physical improvements designed to provide amenities for CSKT tribal members and to help activate the site. These features are identified on the following pages.



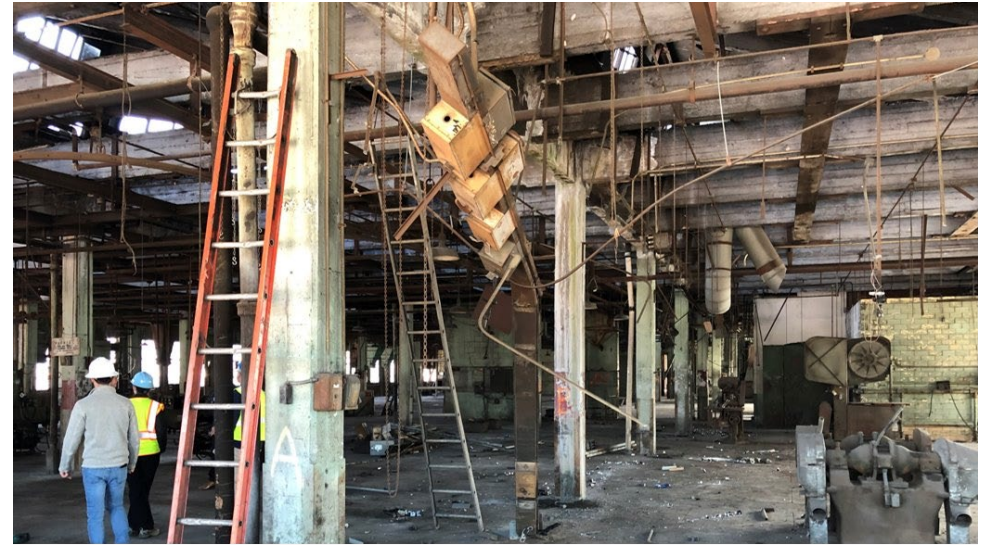
HOLE #1 OF THE DISC GOLF COURSE, INCORPORATING REMNANTS OF THE PREVIOUS INDUSTRIAL USE AS A CANVAS FOR COMMUNITY ART

Conceptual Reuse Plan Example



LR TA-Site Reuse Assessment

- **Research**
 - Property history
 - Environmental conditions
 - Neighborhood setting
- **Market assessment**
 - Demographic characteristics
 - Economic characteristics
 - Real estate trends
- **Reuse alternatives** – based on information gathered, 3 potential reuse options and potential funding sources



Lunkenheimer LR TA Project site tour with EPA contractors; this project had a market analysis, site reuse assessment, and pro forma (real estate financial model) completed, Cincinnati, OH

Reuse Renderings



Light Industrial



Community Center



Renewable Energy



KSU Tribal TAB

KSU Tribal TAB (Technical Assistance to Brownfields)

- Jennifer Clancey and Oral Saulters
- Tribal-TAB@ksu.edu
- www.tribaltab.org



Tribal Brownfields Knowledge Circle

Sign up for their newsletter!!

A [new] and exclusive, Tribal-only space to hosts forums, workshops, and "In A Good Way" chats for peer networking

Kristin Prososki, KSU TAB Assistant Regional Director



What can KSU TAB help with?



Brownfields
Foundation and Basics



Grant Funding &
Management



Community
Engagement



Climate, Resilience,
Green Infrastructure &
Energy



Redevelopment:
Community, Economic
& Finance

KSU TAB works closely with federal and state agencies to assist communities/tribes in their revitalization efforts of brownfields sites.

Assistance is tailored to the specific needs of a community/tribe and is usually coordinated through the city, tribal or non-profit brownfields project manager.



Other Funding Sources

- **Revolving Loan Fund (RLF) Grants**
 - Many states and large cities are recipients
 - Recipients provide loans and subgrants to carry out cleanup activities at brownfield sites
 - **Loans must be repaid**



SWIFR and Other EPA Resources

- **Funding from EPA SWIFR** (closed Jan. 2026)
<https://www.epa.gov/circulareconomy/solid-waste-infrastructure-recycling-grants-states-and-territories>
- **USDA** <https://www.usda.gov/>
- **US HUD** <https://www.hud.gov/hud-partners/grants>
- **US National Park Service** <https://www.nps.gov/index.html>
- **US Department of Economic Development**
<https://www.eda.gov/>
- **US DOT** <https://www.transportation.gov/>



State Funding Sources

- **State resources**
 - Differs from state to state
 - **Contact your Brownfields representative for specific opportunities and/or questions**



Examples

- How can funding sources and other resources be leveraged?



Example of Leveraging Resources

Annual Appropriation Funding with TAG request → Salary, Travel and Training

TBA → complete Phase II on site ABC

KSU Tribal TAB → help with application materials for ABC Cleanup

Cleanup grant → clean up site ABC and create redevelopment plans

SWIFR grant → create solid waste infrastructure for recycling and process for proper disposal



Another Example of Leveraging Resources

Annual Appropriation Funding → Salary and Travel

KSU Tribal TAB → help with application materials

Assessment Grant → funding for site assessment and community involvement

Land Revitalization TA → community-led redevelopment planning



Thank you!

Jacqueline Coreno
Brownfields Tribal Coordinator
Coreno.Jacqueline@epa.gov

Sarah Gruza – LR TA Coordinator
Gruza.sarah@epa.gov

Yesenia Chavez
Chavez.Yesenia@epa.gov



Cleanup in Wisconsin Point, Fond du Lac Band

