

# YOUTH AND ELDER ENGAGEMENT CENTER

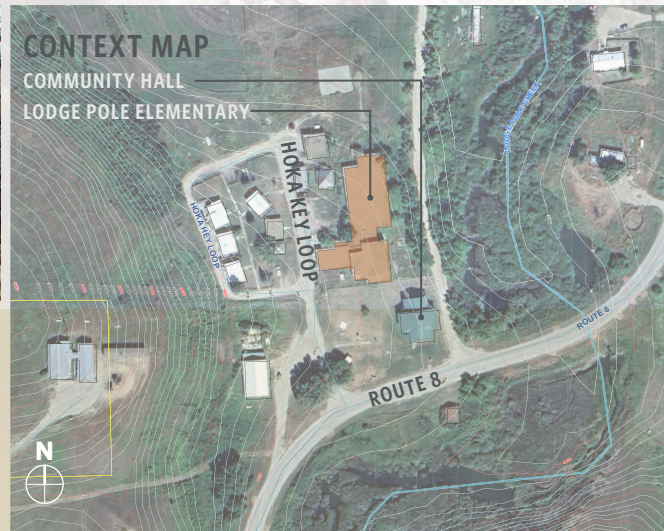
Fort Belknap Indian Reservation - Lodge Pole, Montana  
WINTER 2024



PROPOSED ENTRANCE



EXISTING ENTRANCE



## PROJECT OVERVIEW

Redevelopment of the former Lodge Pole Elementary School, located on the Fort Belknap Indian Reservation, provides a great opportunity to create a gathering place for residents to access resources, participate in activities, and connect with one another.

This Conceptual Reuse Plan was developed through an iterative design process that incorporated a visioning session, site tour, and interviews/feedback from the Fort Belknap Indian community members and key stakeholders. The plan includes steps to clean up the existing structure and establish community focused programs through the development of educational, mixed-use, and gathering spaces.



## A NEW PURPOSE

The goal of the reuse plan is to provide mixed-use spaces and amenities for tribal community members, enhancing both the building and site with a variety of features that will draw a wide range of users. The proposed location for each feature/amenity is identified on the facing page. Key elements of the plan include the creation of additional parking on the site, a craft and cultural items gift shop, art and agricultural studio space for local artists and creators, and multi-use educational rooms with a variety of resources (computers, counseling, language immersion, art classes, agriculture and food preparation space, etc.). Views of the expanded entrance promenade, welcome area, and gift shop are shown on the cover page, this page, and the following page.

At the northern portion of the property, proposed redevelopment includes an expanded parking lot (previously mentioned) to accommodate users and visitors to the building, expanded trails to connect portions of the site to the surrounding area, updated ball fields, and a storage building and stables to accommodate proposed outdoor learning activities.

## PROPOSED UPDATED BUILDING PROGRAM AND FLOORPLAN

### Enhanced Entrance

- Front Desk/Reception
- IT Room
- Administrative

### Back of House

- Storage Rooms
- Restrooms

### Gift Shop

- Crafts
- Cultural items
- Food, Etc.

### MSU Extension Office

- Partnerships

### Sub Tribal Office

- NADC
- Tiwahe

### Classroom

- Computers
- Equine Therapy
- Counselor Training
- Language Immersion
- Trades

### Kitchen

- Classes (with Ag Studio)
- Education/Hands-on Prep

### Agriculture Studio

- Food Security/Sustainability
- Canning
- Butchering/Drying Meat
- Fruits/Apples
- Hydroponics
- Seeds
- Cooking
- 4H

### Art Studio

- Art Classes/Creative
- Canvas
- Regalia
- Ribbon Skirts
- Dancing

### Multi-Use Room

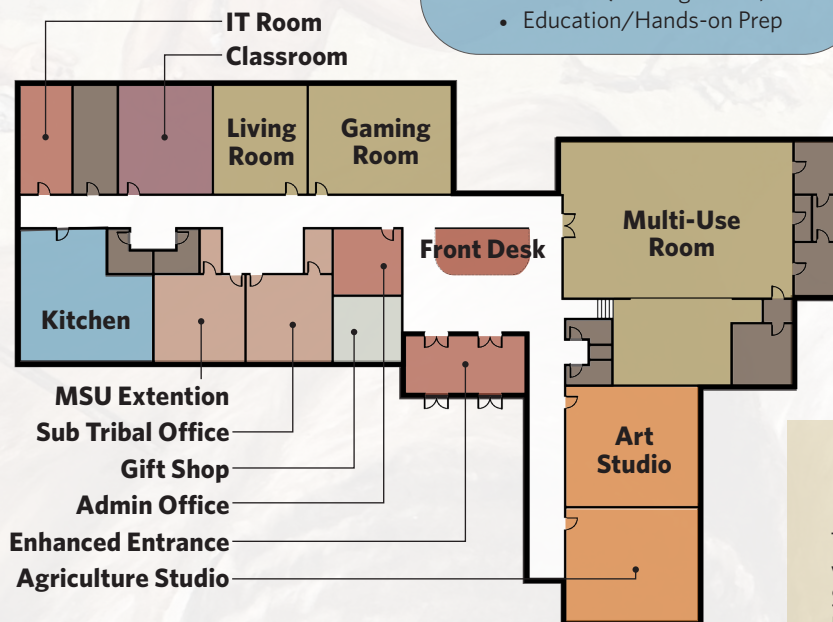
- Sports
- Indoor Market (food, goods, art, etc.)
- Art and Food Fairs/Booths
- Job Fairs
- Meeting Space
- Conferences
- Events
- Performances

### Living Room

- Lounge
- Hang-Out
- Computer Lab
- Warming Space

### Gaming Room

- E-Sports
- Practice
- Competition
- Spectating



### Program Not Advanced due to Regulatory Hurdles

- Centralized Juvenile Detention Center
- Juvenile Long-Term Treatment
- Halfway House
- Assisted Living / Dialysis
- Alternative School



PROPOSED ENTRANCE

## RE-IMAGINING THE PROGRAM

The “mixed-use building” represents a single structure designed to house a variety of functions—including a retail and arts & craft shop, tribal and Montana State offices, community spaces, a kitchen, and art and agriculture studios. Proposed services and activities include educational workshops, meeting spaces, art studios and exhibition areas, and agricultural classes, catering to diverse community needs. The center will facilitate knowledge exchange through classes, lectures, and community forums, allowing residents to share expertise and learn new skills. Integrating these different uses within one space will naturally encourage tribal members with different backgrounds to interact and build connections.



EXISTING ENTRANCE



PROPOSED ENTRANCE

## LOOKING AHEAD

The proposed mixed-used, multi-use redevelopment at the former Lodgepole School creates a generational opportunity for community development and collaboration. The tribal community can work together to develop programs based at this redeveloped site that meet the needs of its members, including youth and the elderly. Not only will this mixed-use building strengthen the tribe's physical well-being, but also its mental and social health. The re-developed facility will help foster a sense of community and provide a variety of educational and recreational activities to keep tribal members happy, social, and productive.



EXISTING MULTI-USE ROOM

